

PETA SEBARAN PRAKIRAAN CURAH HUJAN BULAN NOVEMBER 2024 DI INDONESIA
PUSAT DATA DAN SISTEM INFORMASI PERTANIAN
SEKRETARIAT JENDERAL - KEMENTERIAN PERTANIAN
2024



Legenda




— Batas Provinsi

Sumber:




1. Peta wilayah administrasi Indonesia Tahun 2015 (BIG, 2015)
2. Prakiraan curah hujan bulanan, update 1 November 2024 (BMKG)

Curah Hujan (mm/bulan)

Rendah

-  0 - 20 mm
-  21 - 50 mm
-  51 - 100 mm

Sedang

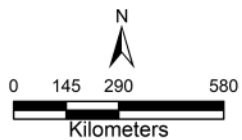
-  101 - 150 mm
-  151 - 200 mm
-  201 - 300 mm

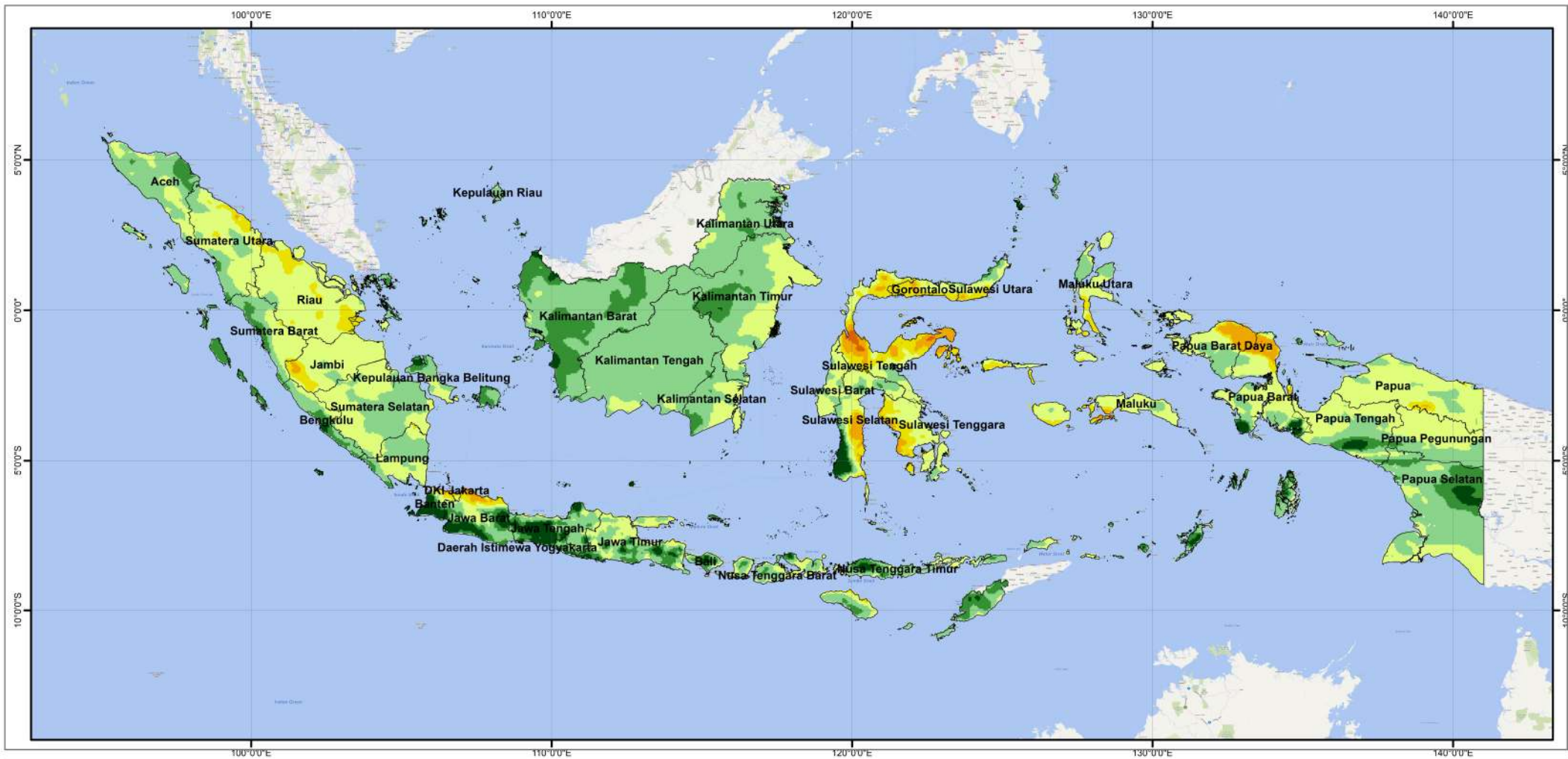
Tinggi

-  301 - 400 mm
-  401 - 500 mm

Sangat Tinggi

-  > 500 mm





PETA SEBARAN PRAKIRAAN CURAH HUJAN BULAN DESEMBER 2024 DI INDONESIA
PUSAT DATA DAN SISTEM INFORMASI PERTANIAN
SEKRETARIAT JENDERAL - KEMENTERIAN PERTANIAN
2024



Legenda

— Batas Provinsi

Sumber:

1. Peta wilayah administrasi Indonesia Tahun 2015 (BIG, 2015)
2. Prakiraan curah hujan bulanan, update 1 November 2024 (BMKG)

Curah Hujan (mm/bulan)

Rendah

- 0 - 20 mm
- 21 - 50 mm
- 51 - 100 mm

Sedang

- 101 - 150 mm
- 151 - 200 mm
- 201 - 300 mm

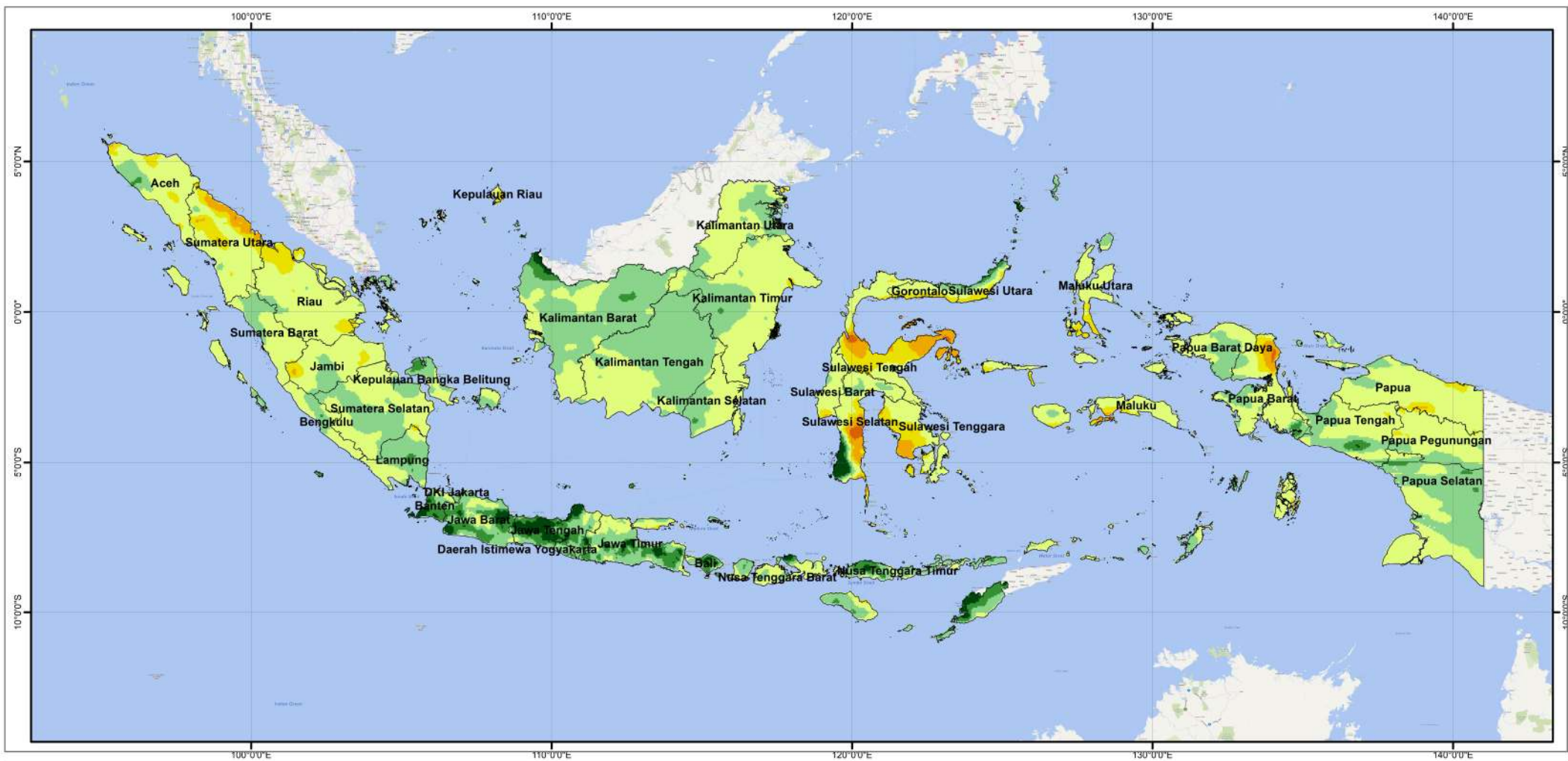
Tinggi

- 301 - 400 mm
- 401 - 500 mm

Sangat Tinggi

- > 500 mm





PETA SEBARAN PRAKIRAAN CURAH HUJAN BULAN JANUARI 2025 DI INDONESIA
PUSAT DATA DAN SISTEM INFORMASI PERTANIAN
SEKRETARIAT JENDERAL - KEMENTERIAN PERTANIAN
2024



Legenda




— Batas Provinsi

Sumber:




1. Peta wilayah administrasi Indonesia Tahun 2015 (BIG, 2015)
2. Prakiraan curah hujan bulanan, update 1 November 2024 (BMKG)

Curah Hujan (mm/bulan)


Rendah

-  0 - 20 mm
-  21 - 50 mm
-  51 - 100 mm


Sedang

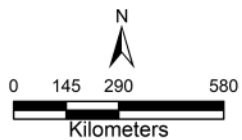
-  101 - 150 mm
-  151 - 200 mm
-  201 - 300 mm

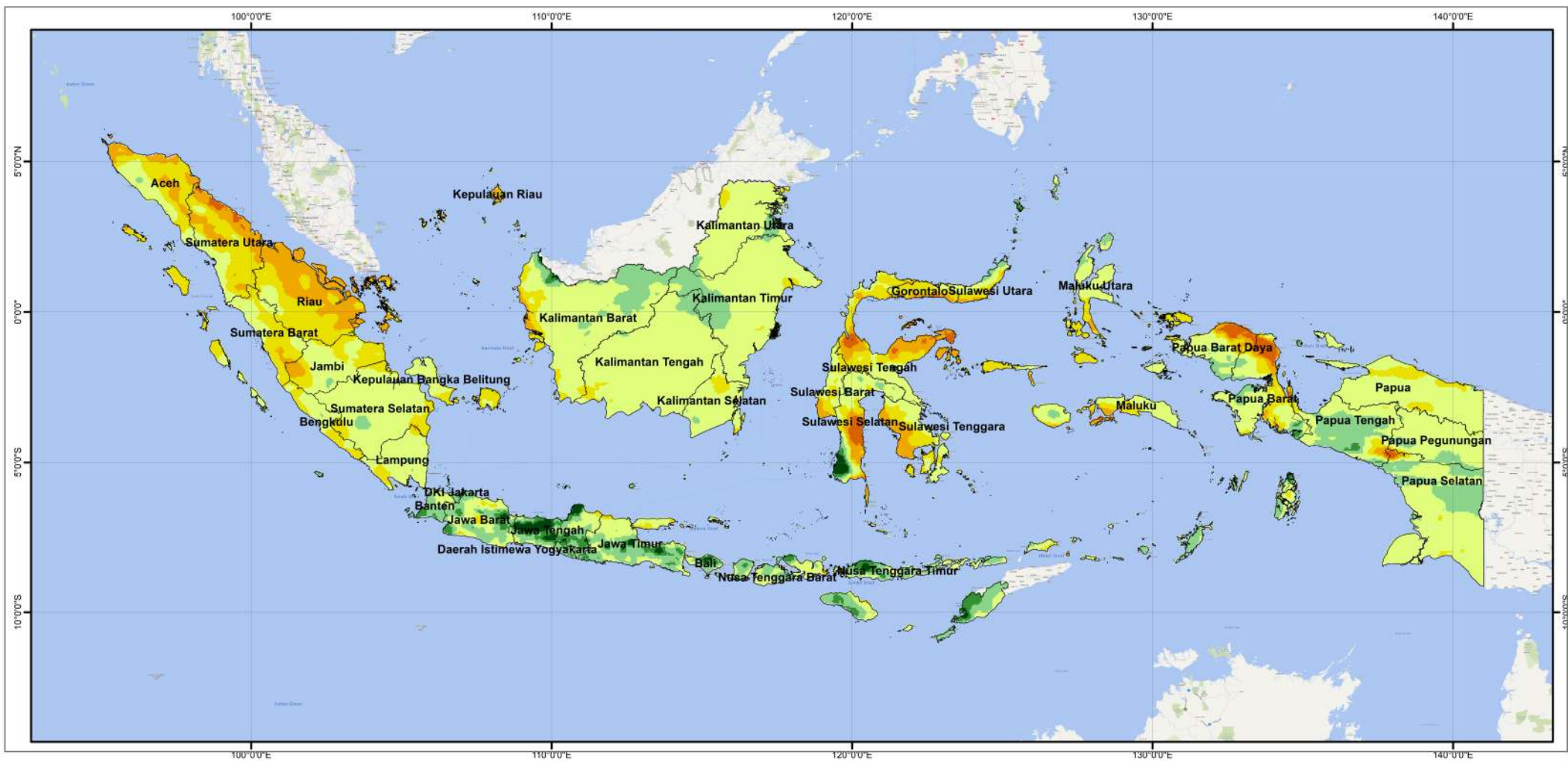
Tinggi

-  301 - 400 mm
-  401 - 500 mm

Sangat Tinggi

-  > 500 mm





PETA SEBARAN PRAKIRAAN CURAH HUJAN BULAN FEBRUARI 2025 DI INDONESIA
PUSAT DATA DAN SISTEM INFORMASI PERTANIAN
SEKRETARIAT JENDERAL - KEMENTERIAN PERTANIAN
2024



Legenda




— Batas Provinsi

Sumber:




1. Peta wilayah administrasi Indonesia Tahun 2015 (BIG, 2015)
2. Prakiraan curah hujan bulanan, update 1 November 2024 (BMKG)

Curah Hujan (mm/bulan)

Rendah

-  0 - 20 mm
-  21 - 50 mm
-  51 - 100 mm


Sedang

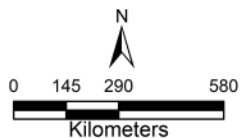
-  101 - 150 mm
-  151 - 200 mm
-  201 - 300 mm

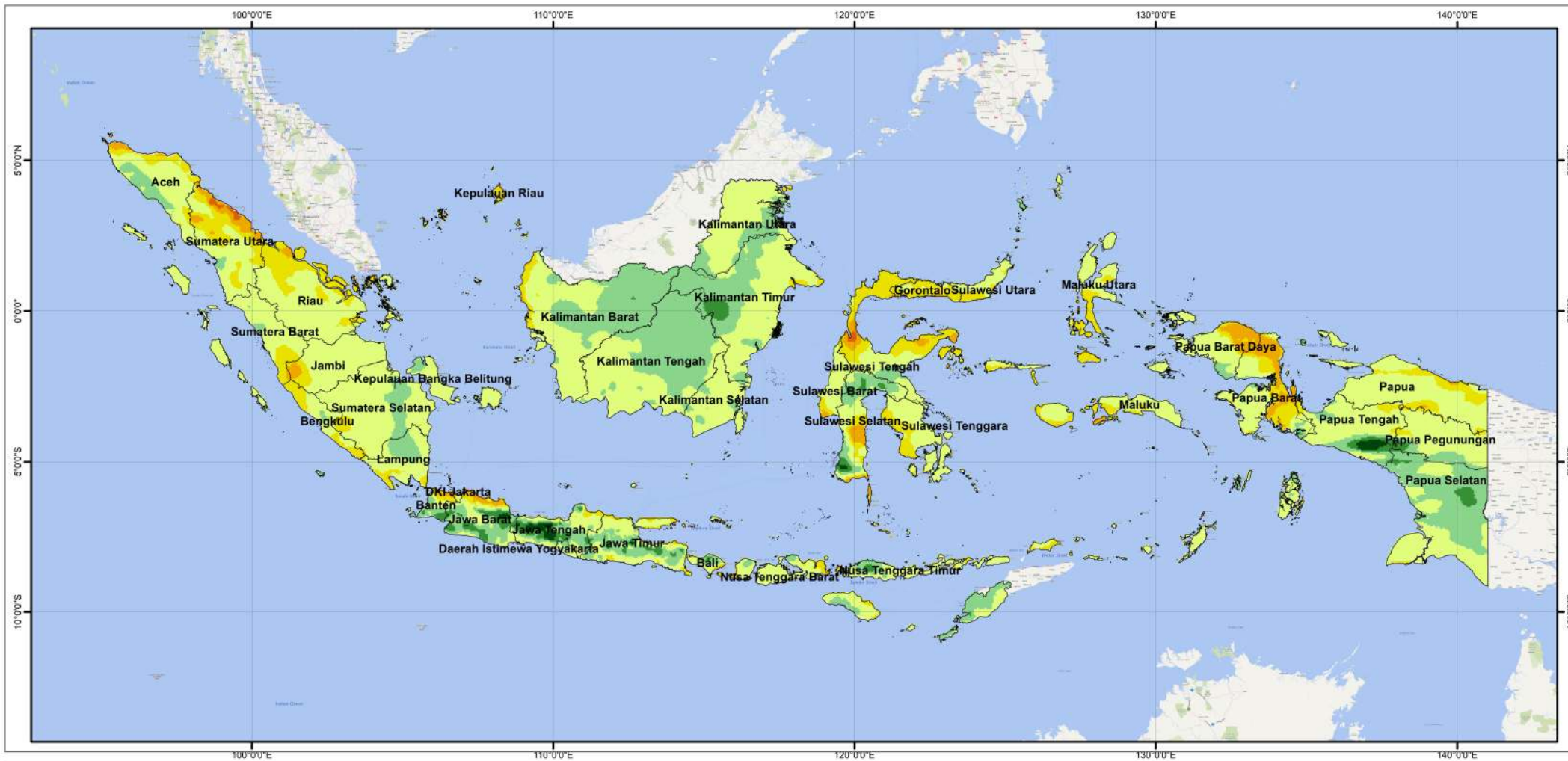
Tinggi

-  301 - 400 mm
-  401 - 500 mm

Sangat Tinggi

-  > 500 mm





PETA SEBARAN PRAKIRAAN CURAH HUJAN BULAN MARET 2025 DI INDONESIA
PUSAT DATA DAN SISTEM INFORMASI PERTANIAN
SEKRETARIAT JENDERAL - KEMENTERIAN PERTANIAN
2024



Legenda

— Batas Provinsi

Sumber:

1. Peta wilayah administrasi Indonesia Tahun 2015 (BIG, 2015)
2. Prakiraan curah hujan bulanan, update 1 November 2024 (BMKG)

Curah Hujan (mm/bulan)

Rendah

- 0 - 20 mm
- 21 - 50 mm
- 51 - 100 mm

Sedang

- 101 - 150 mm
- 151 - 200 mm
- 201 - 300 mm

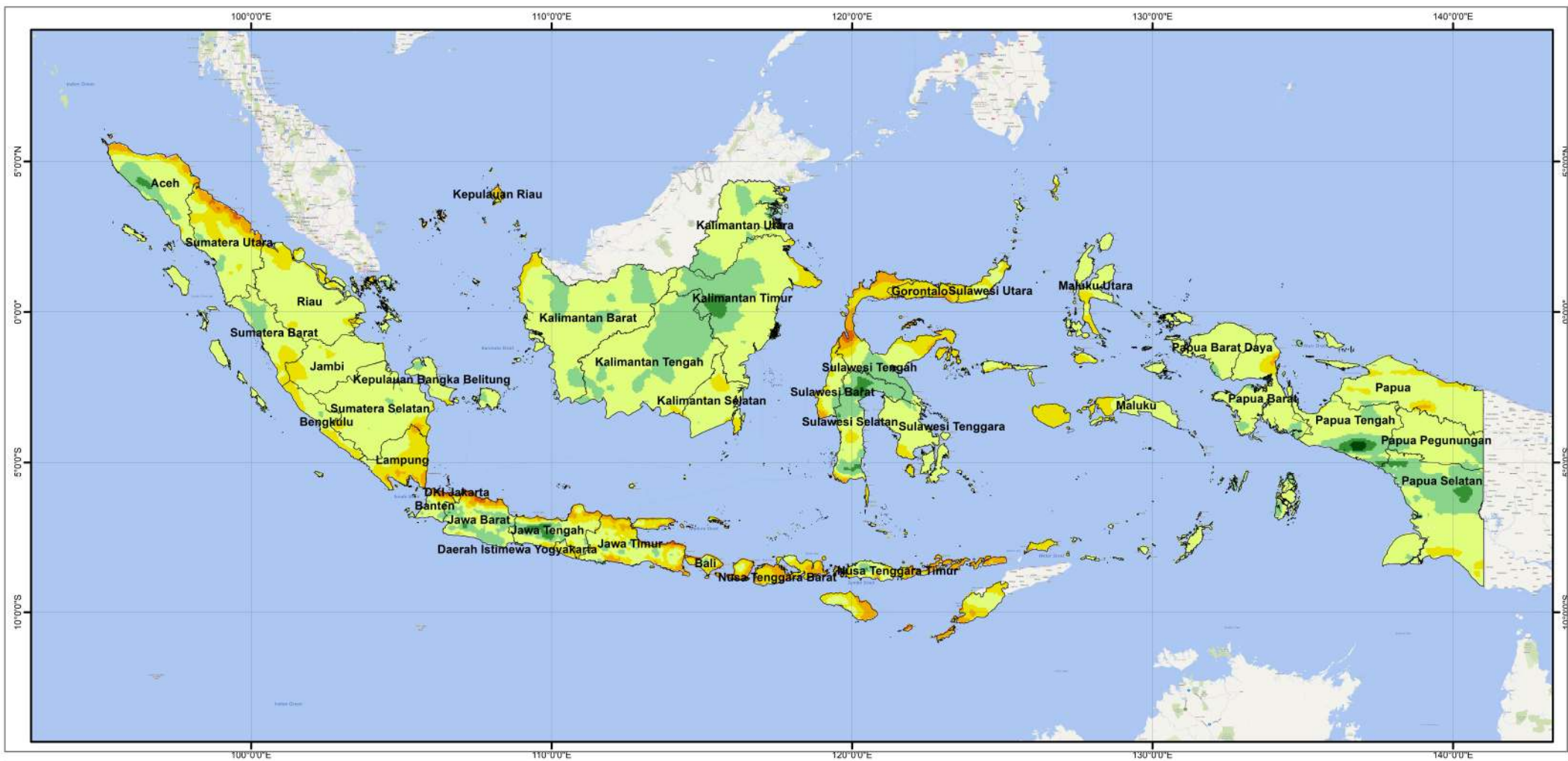
Tinggi

- 301 - 400 mm
- 401 - 500 mm

Sangat Tinggi

- > 500 mm





PETA SEBARAN PRAKIRAAN CURAH HUJAN BULAN APRIL 2025 DI INDONESIA
PUSAT DATA DAN SISTEM INFORMASI PERTANIAN
SEKRETARIAT JENDERAL - KEMENTERIAN PERTANIAN
2024



Legenda


— Batas Provinsi

Sumber:




1. Peta wilayah administrasi Indonesia Tahun 2015 (BIG, 2015)
2. Prakiraan curah hujan bulanan, update 1 November 2024 (BMKG)

Curah Hujan (mm/bulan)

Rendah

-  0 - 20 mm
-  21 - 50 mm
-  51 - 100 mm


Sedang

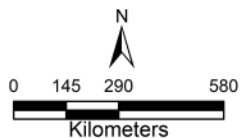
-  101 - 150 mm
-  151 - 200 mm
-  201 - 300 mm

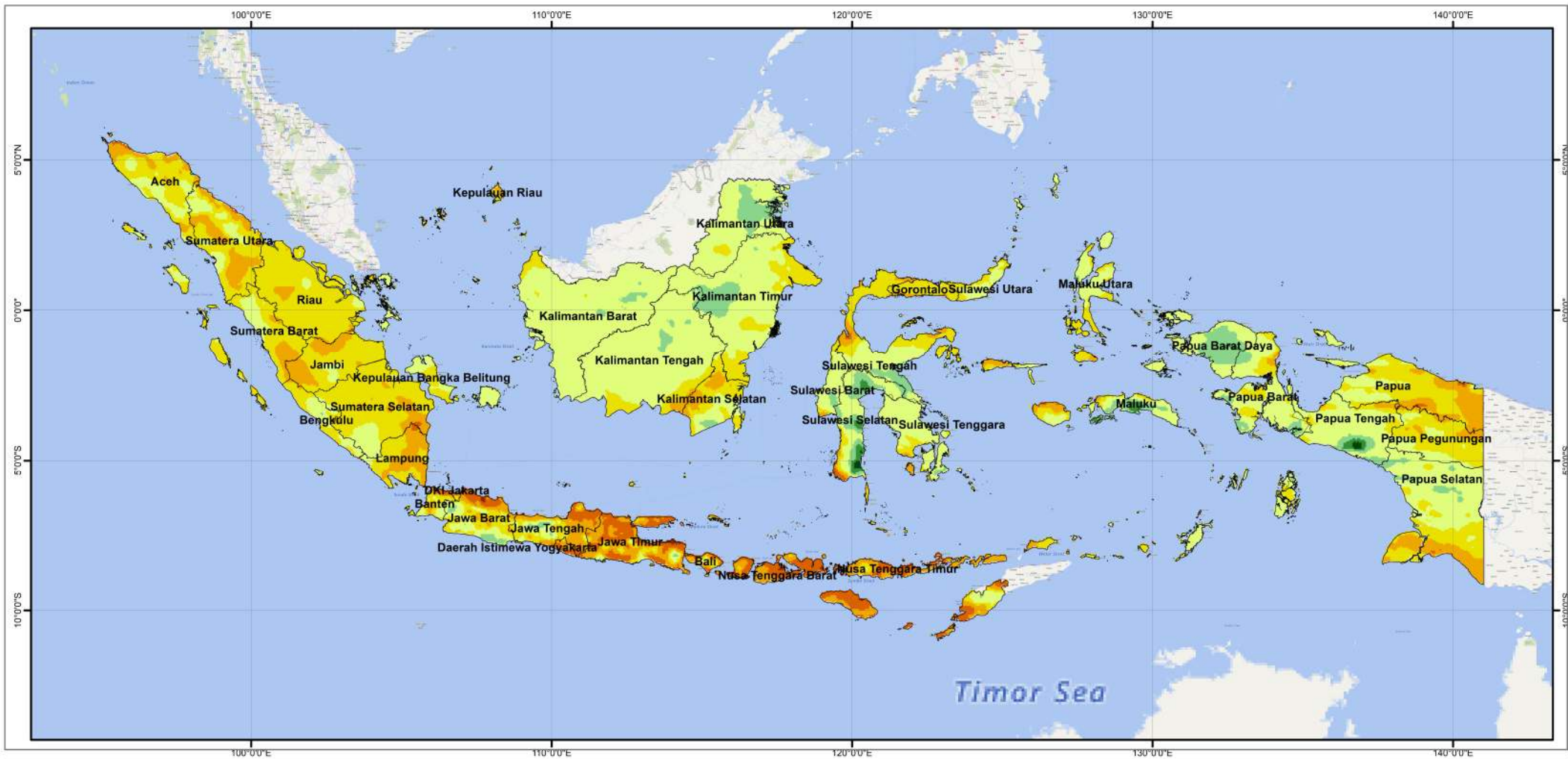
Tinggi

-  301 - 400 mm
-  401 - 500 mm

Sangat Tinggi

-  > 500 mm





PETA SEBARAN PRAKIRAAN CURAH HUJAN BULAN MEI 2025 DI INDONESIA
PUSAT DATA DAN SISTEM INFORMASI PERTANIAN
SEKRETARIAT JENDERAL - KEMENTERIAN PERTANIAN
2024



Legenda




— Batas Provinsi

Sumber:




1. Peta wilayah administrasi Indonesia Tahun 2015 (BIG, 2015)
2. Prakiraan curah hujan bulanan, update 1 November 2024 (BMKG)

Curah Hujan (mm/bulan)

Rendah

-  0 - 20 mm
-  21 - 50 mm
-  51 - 100 mm

Sedang

-  101 - 150 mm
-  151 - 200 mm
-  201 - 300 mm

Tinggi

-  301 - 400 mm
-  401 - 500 mm

Sangat Tinggi

-  > 500 mm

